



**World Bank Forest Carbon  
Partnership Facility Program  
An Experience from Nepal**

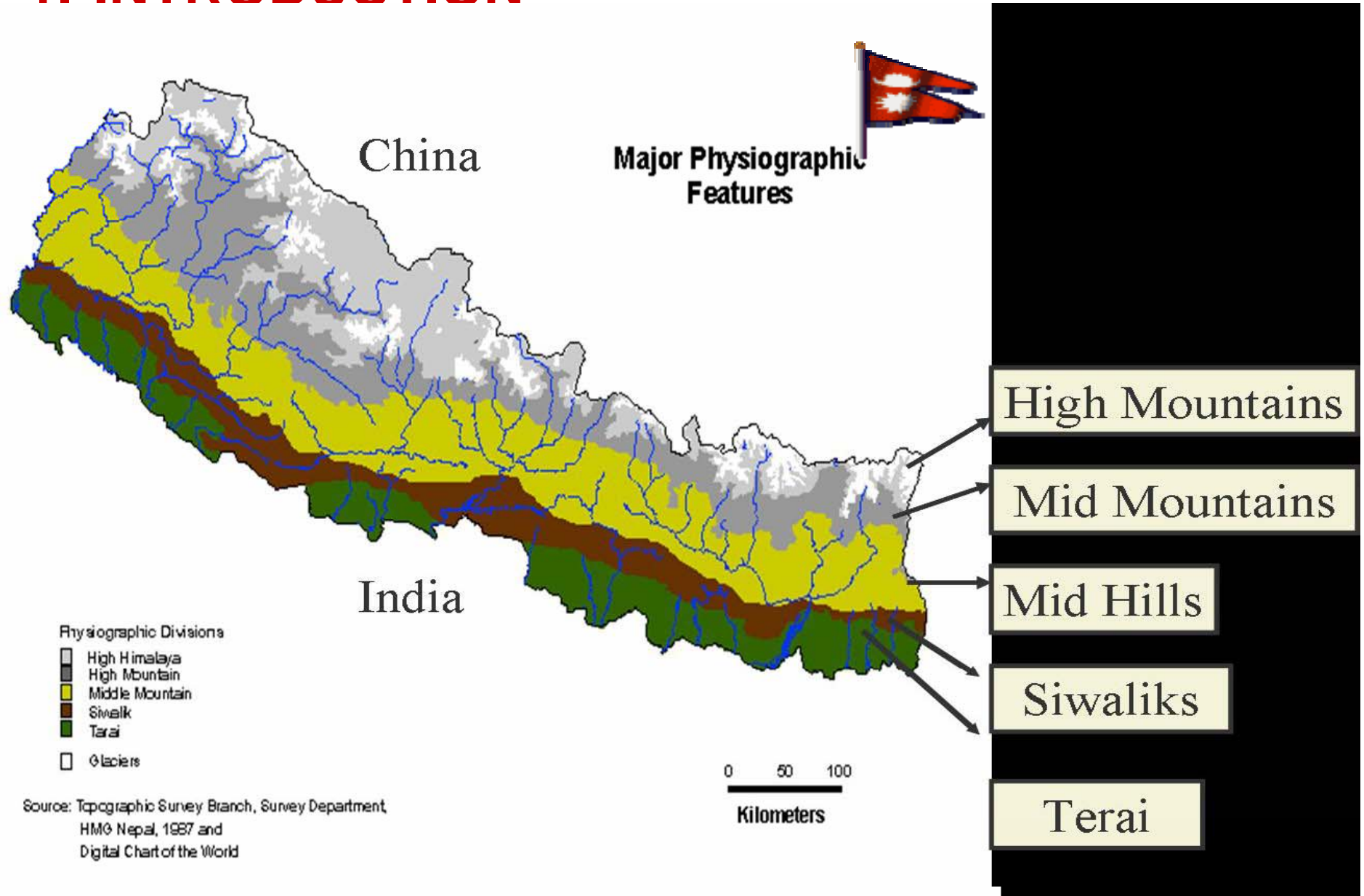
**Pem Kandel  
Ministry of Forest, Nepal  
pkkandelnepal@gmail.com**

**CD workshop on  
Understanding National Inventories for  
LULUCF sector: Berlin, Germany  
Nov 5, 2008**



1. Introduction,
2. Processes followed to formulate R-Pin report
3. Lessons learned
4. R-Plan formulation and future direction

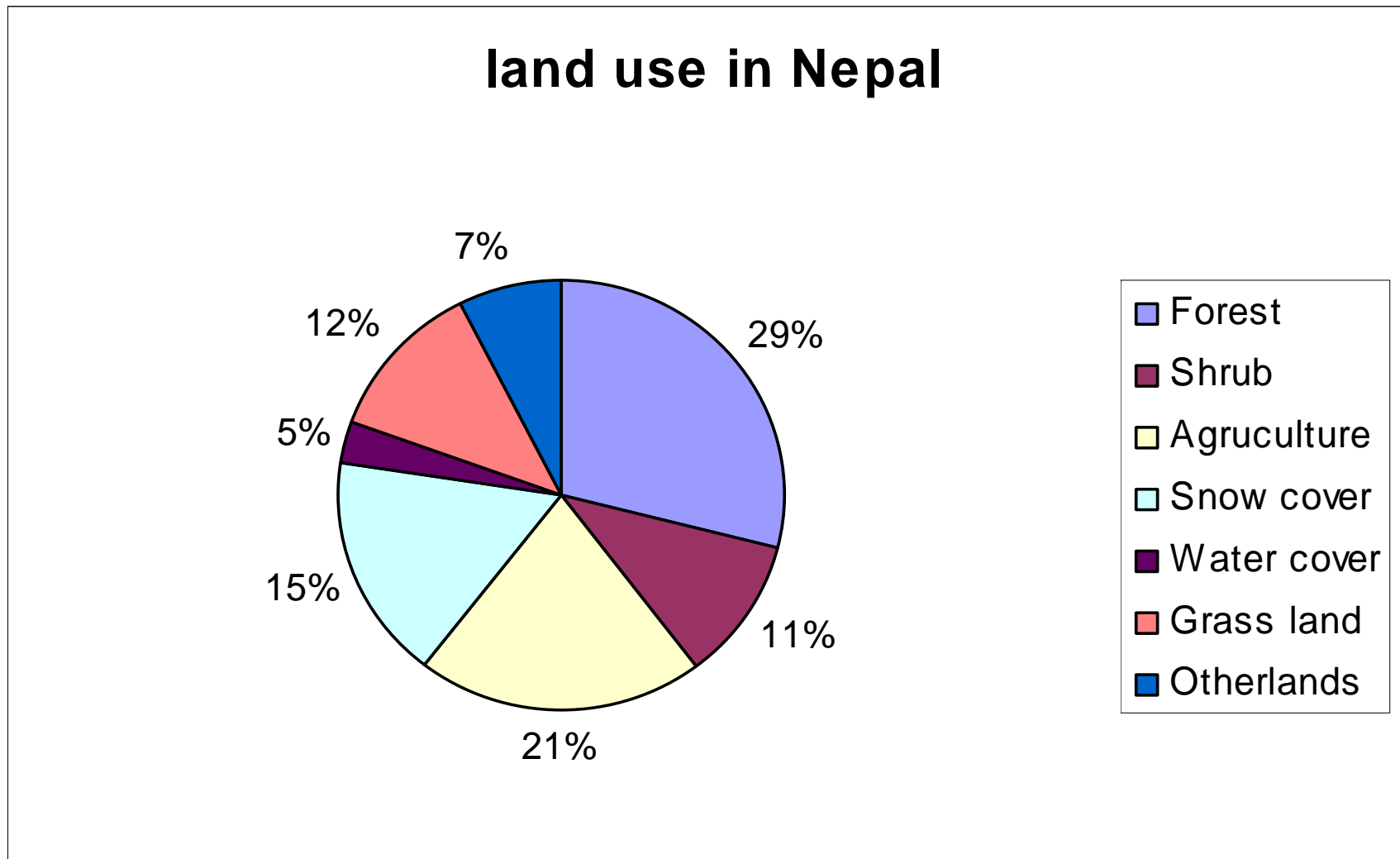
# 1. INTRODUCTION



Total Area: 147,181 Sq. Km.

Population: 24 M

# 1.1 Land use system in Nepal



## 1.2 Forests and Forestry

- **Nepal is dominated by agrarian society;**
- **Forestry, the integral part of the; agriculture and rural livelihood;**
- **Fuel-wood, principal source of rural energy;**



# 1.3 Ownership

## 1. National Forest (NF)

- Many management systems and ownerships within the NF;
- **CF, the most prominent system where local communities play the role of manager;**
- Protected Areas (PAs) cover 20% of the country's total area.

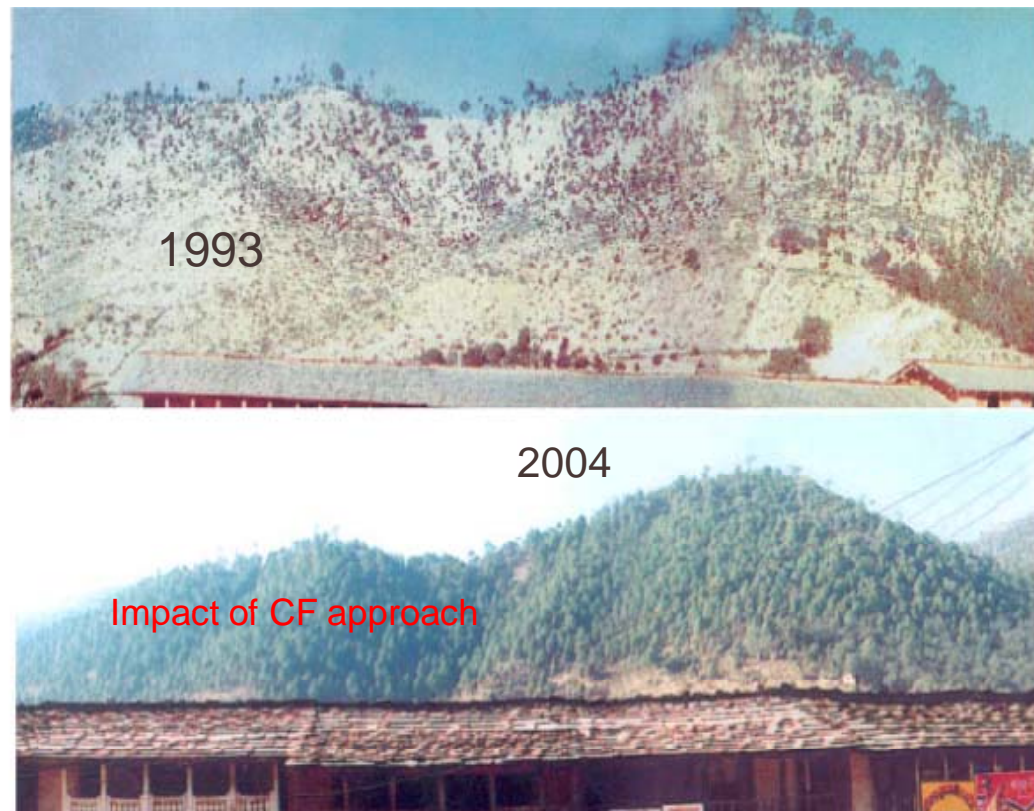
## 2. Private Forest

- Sufficient data not available;

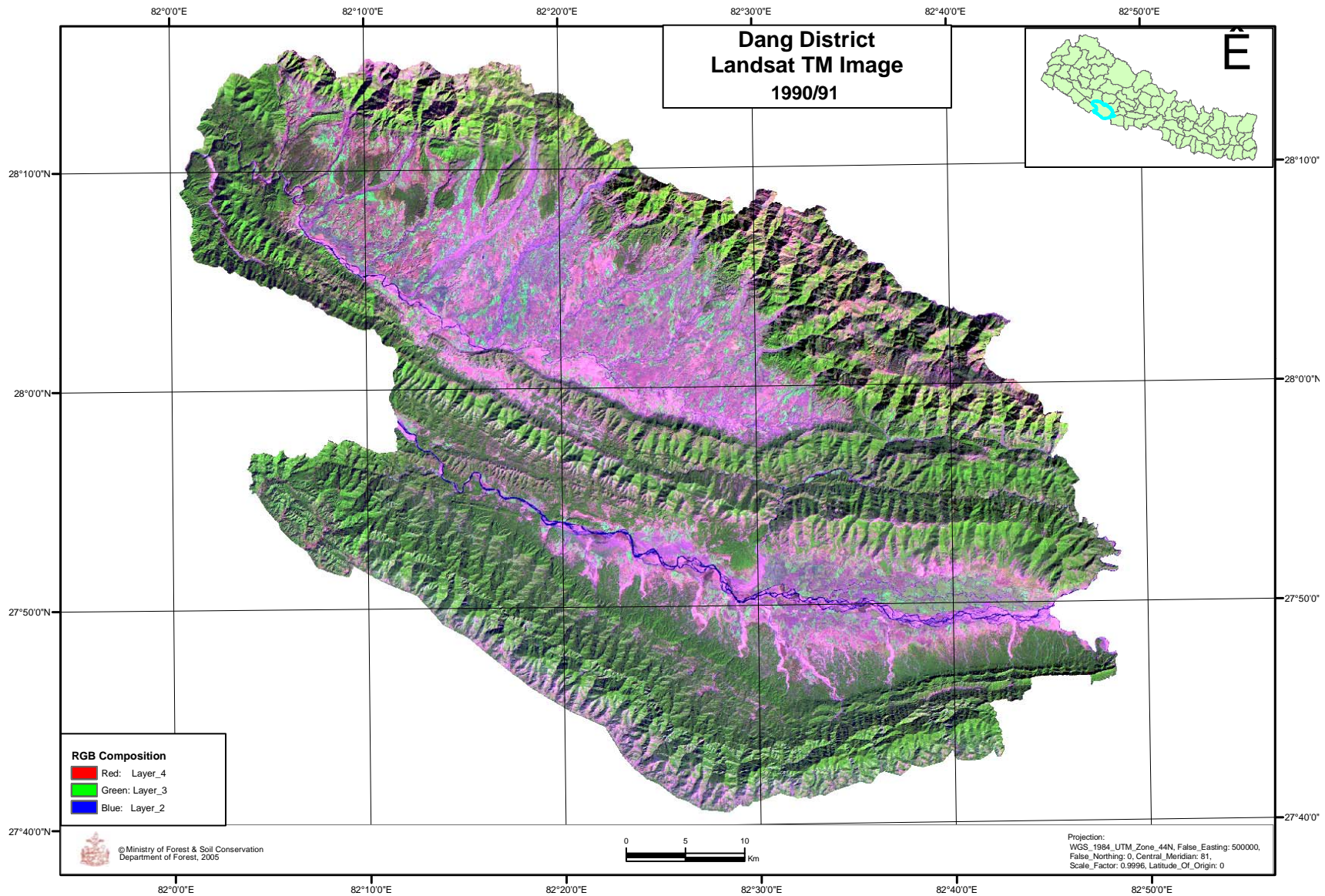


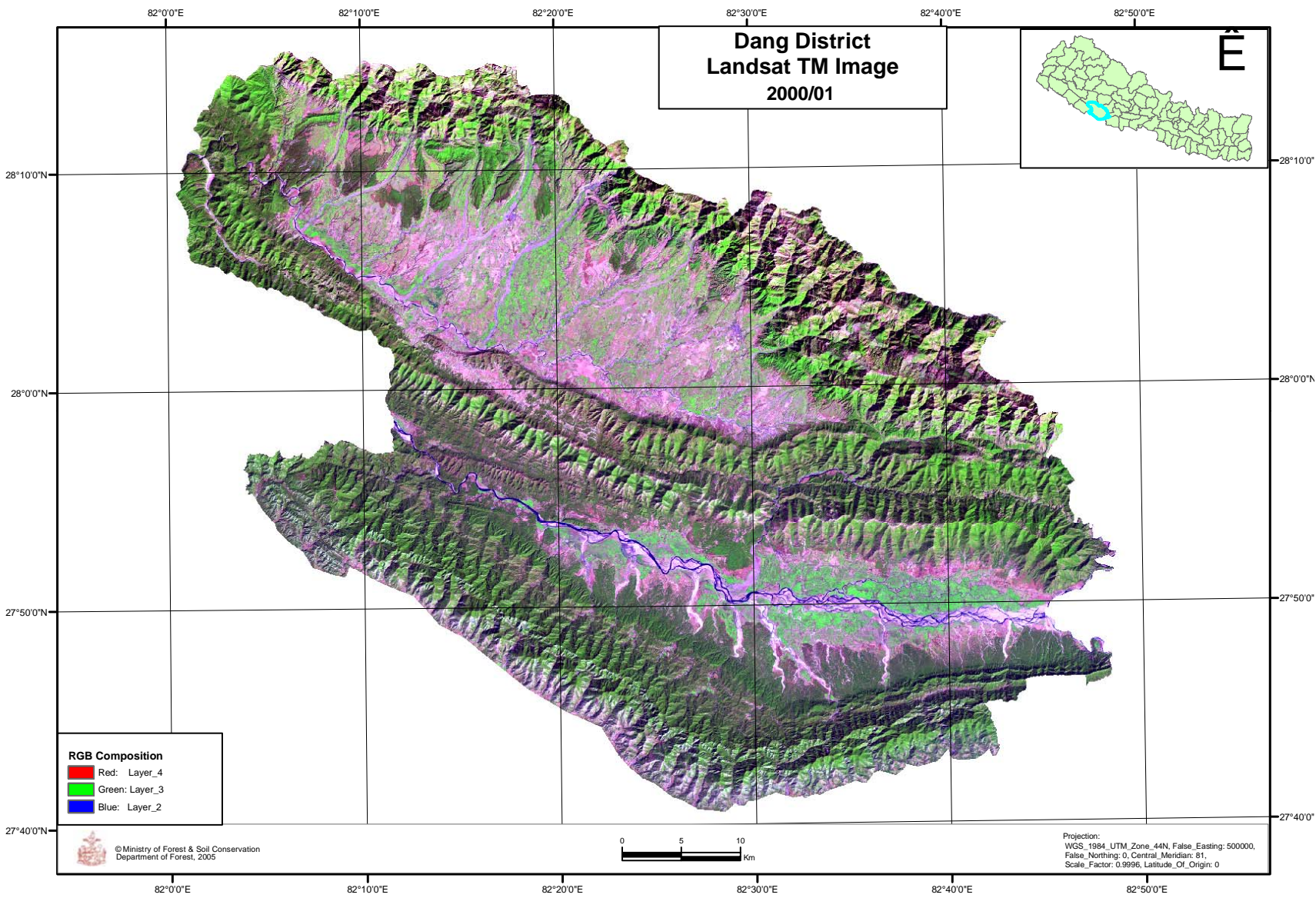
Denuded landscapes restored while forest condition improved; and

- Rate of deforestation decreased from 1.3% per annum in 1990s to 0.08% in 2001 per annum in Southern Terai.



# Case study: Landsat Image to see the cover change





# Naturally rejuvenated CF in the study area



## 2. Process followed to formulate R-Pin

- Key stakeholders identification,
- Conduct half day workshop,
- Formulating representative team,
- Discussion/interactions on world bank template to answer the questions
- Writing team formation,
- Making consensus in stakeholder meeting,
- Approving from the Ministry and send to world bank within the timeframe.

# Lessoned learned

- Process was totally participatory,
- No consultant hired,
- Creating National ownership,
- Process rationalization through National coordination,
- Participatory processes increase, effectiveness and efficiency and
- Outsider facilitate only

## 3.R-plan formulation and future direction

- Nepal selected for both FCPF and steering committee,
- Purposes: to formulate R-Plan and capacity building for REDD readiness,
- Aiming to achieve carbon trading goal,
- Follow the participatory processes and
- Formulating framework for national forest inventory.

## 4: Challenges

- Bringing people together,
- Cross-sectional coordination,
- Formulating comprehensive, valid and scientific resource inventory framework,
- Conducting National Forest Inventory to deal with LULUCF and carbon stock,
- National capacity building,

## 5. Conclusion

- Participatory project formulation rationalize the processes,
- Creating the national ownership and
- Increase efficiency and effectiveness.
- But technical matter need to be dealt with expert group.
- Nepal can be a venue to learn experience on participatory forest management and
- REDD readiness processes.

**Thanks**